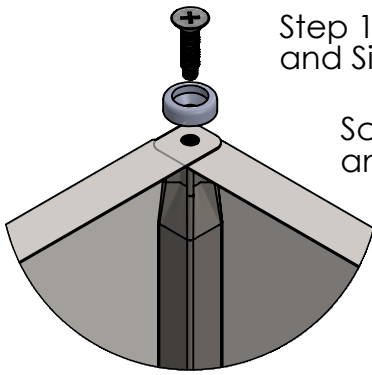
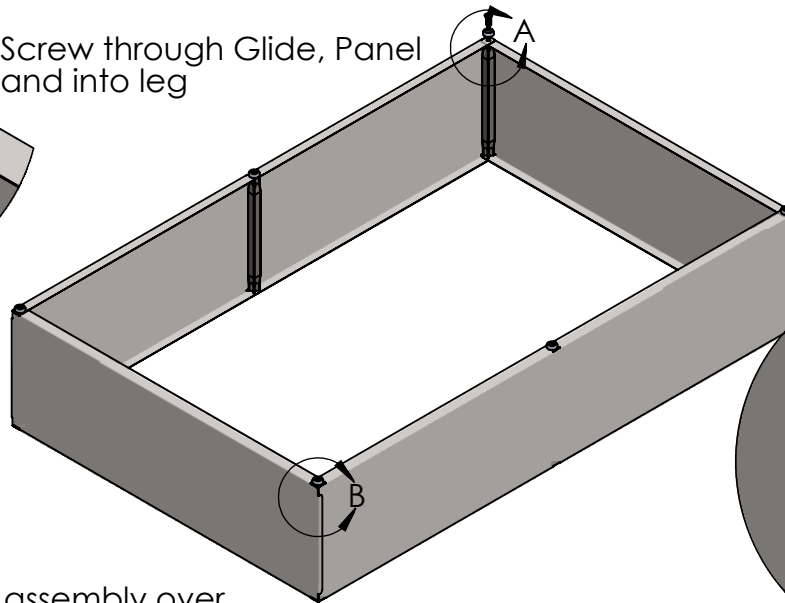


Step 1: Assemble six Legs, Glides, End and Side Panel with Screws.

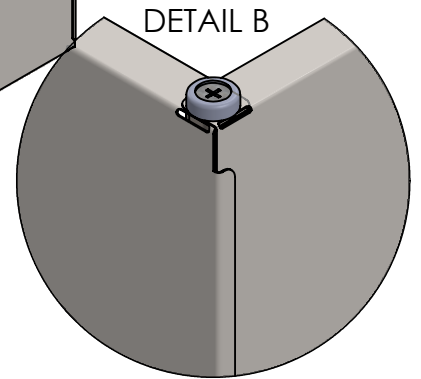


DETAIL A

Screw through Glide, Panel and into leg



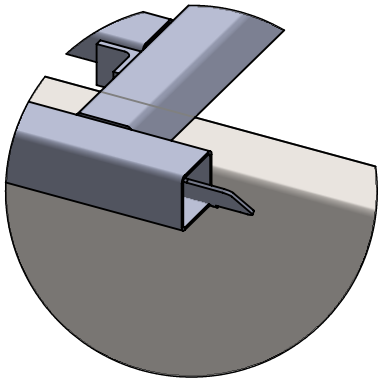
End Panel flaps must be outside of Side Panels



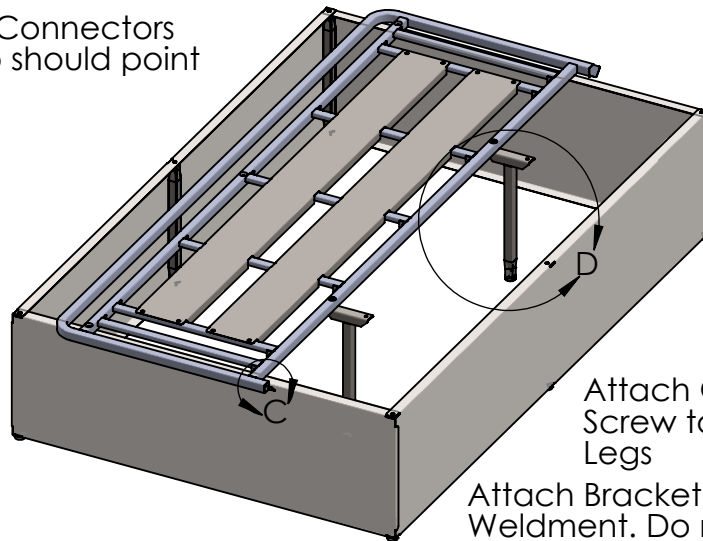
DETAIL B

Step 2: Carefully turn assembly over.

Drive long end of Tube Connectors into one weldment. Tab should point inward and down

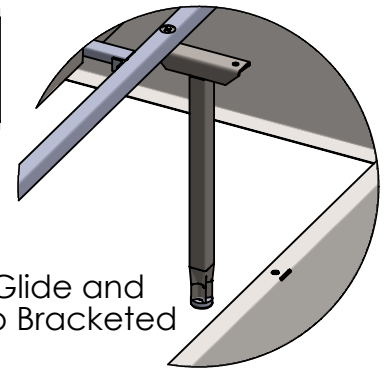


DETAIL C



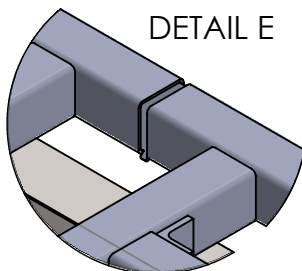
Attach Glide and Screw to Bracketed Legs

Attach Bracketed Legs to same Weldment. Do not tighten yet.

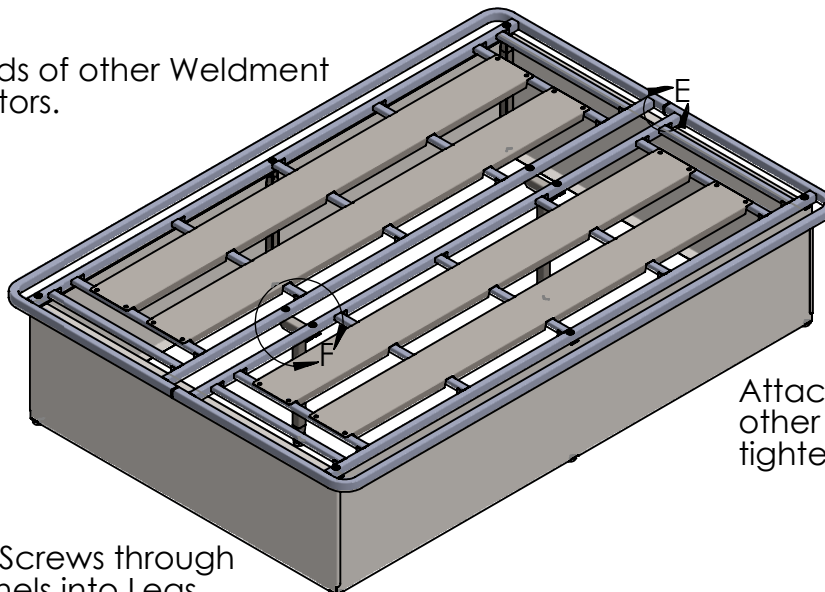


DETAIL D

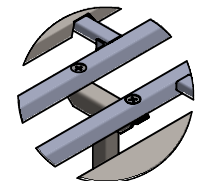
Step 3: Fit open ends of other Weldment over Tube Connectors.



DETAIL E



Attach Bracketed Legs to other Weldment. Do not tighten yet.



DETAIL F

Install six remaining Screws through Weldments and Panels into Legs.

Do not Tighten yet. A Philips screwdriver may help to align holes in Weldments, Panels and Legs. After all ten Screws have been started, tighten all.