

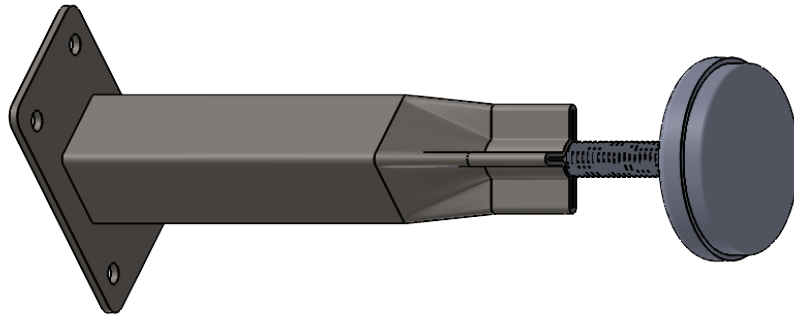
# GM250 Center Support

Dear Customer:

The employees of Garrett Mirror Support Co. would like to thank you for the purchase of our products, made in USA. Please contact us with any questions or comments at (704) 873-3731

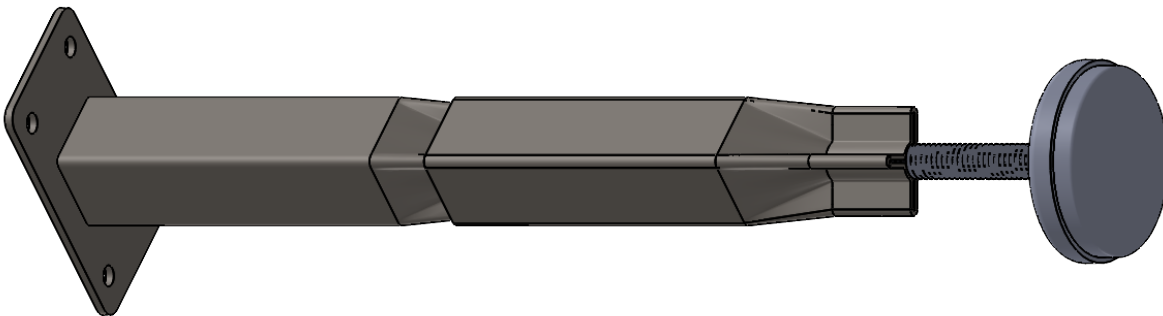
Sincerely,

The Employees of Garrett Mirror Support Co.



Use Leg and Glide if bottom of box spring is less than 10" from floor.  
(see illustration above)

If bottom of box spring is greater than 10" from floor fit Leg Extension onto Leg  
and install Glide in Leg Extension  
(see illustration below)



Attach leg to slat using included wood screws. Adjust glide to approximately 1/4" off floor before installing box spring and mattress