

IMPORTANT

WEAR GLOVES, SHARP EDGES MAY BE ENCOUNTERED DURING ASSEMBLY

SIDE AND END PANELS HAVE A PROTECTIVE FILM THAT SHOULD BE REMOVED BEFORE ASSEMBLY

APPLY FRICTION TAPE TO WELDMENT PANELS


DO NOT OVER TIGHTEN FASTENERS


REQUIRED TOOLS

- #4 PHILLIPS BIT AND POWER SCREWDRIVER


- PLIERS FOR HOLDING LEGS

PARTS BAG

 **6 - GLIDE (8)**

 **7 - SCREW (8 Short + 10 Long)**

 **8 - TUBE CONNECTOR(2)**

 **9 - FRICTION TAPE**

PARTS LIST

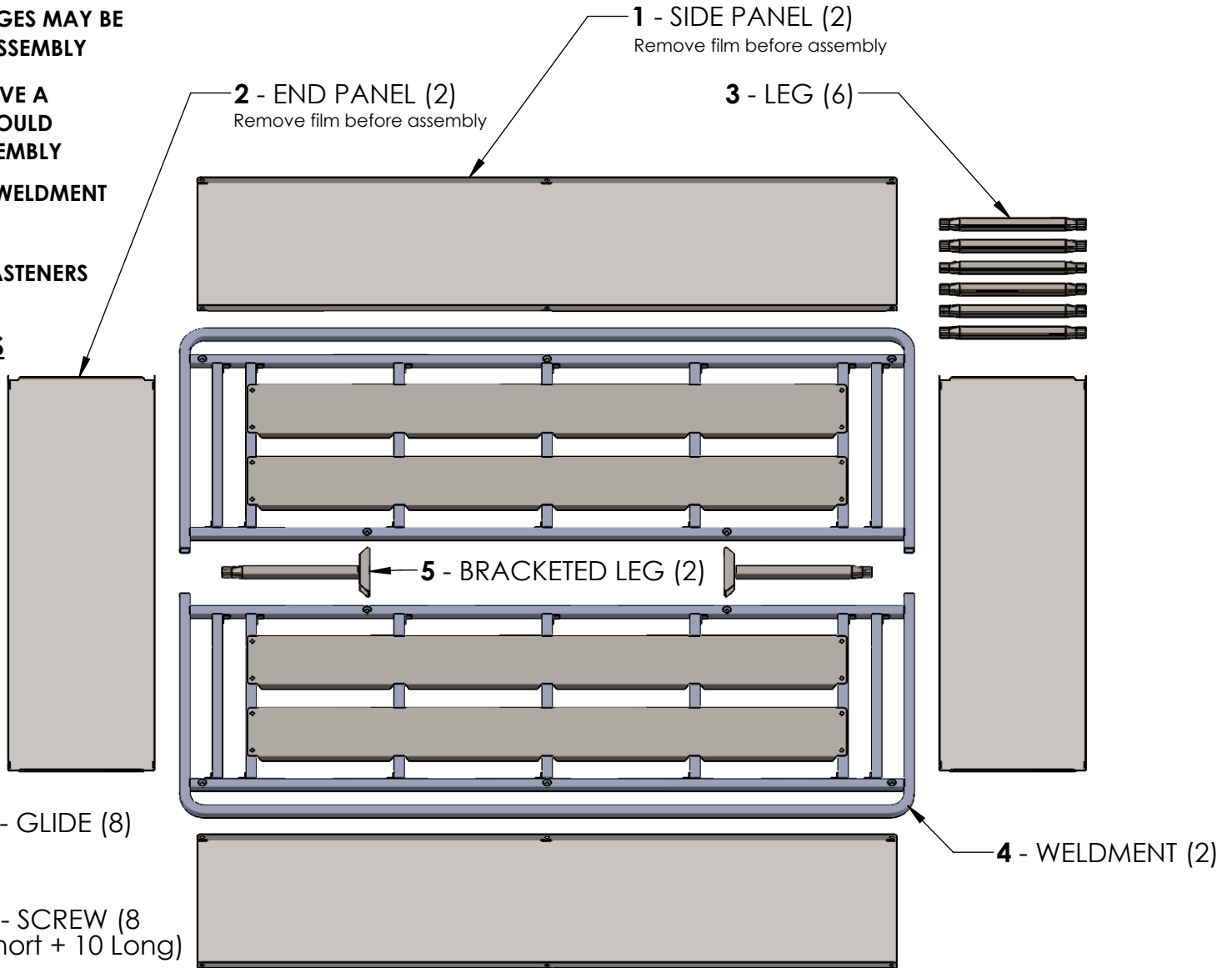
1 - SIDE PANEL (2)
Remove film before assembly

2 - END PANEL (2)
Remove film before assembly

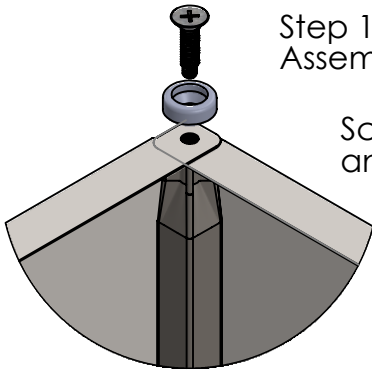
3 - LEG (6)

5 - BRACKETED LEG (2)

4 - WELDMENT (2)

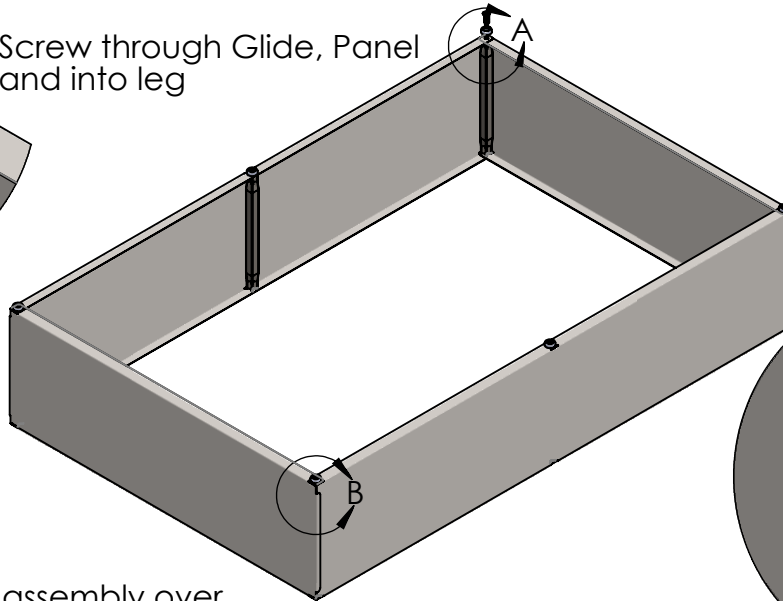


Step 1: Remove Protective Film from Side and End Panels
Assemble six Legs, Glides, End and Side Panel with Short Screws.



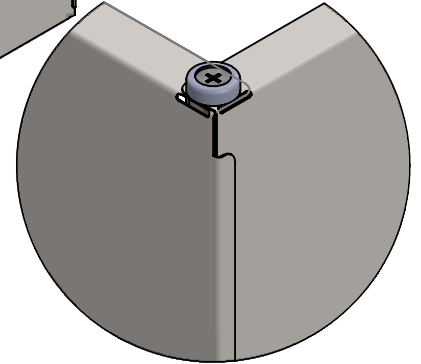
DETAIL A

Screw through Glide, Panel
and into leg



End Panel flaps
must be outside
of Side Panels

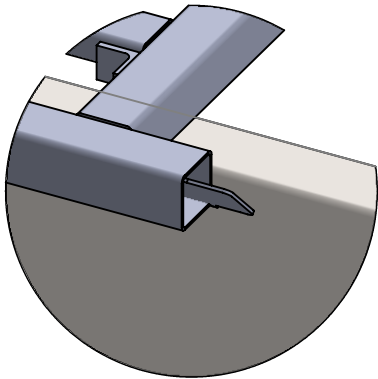
DETAIL B



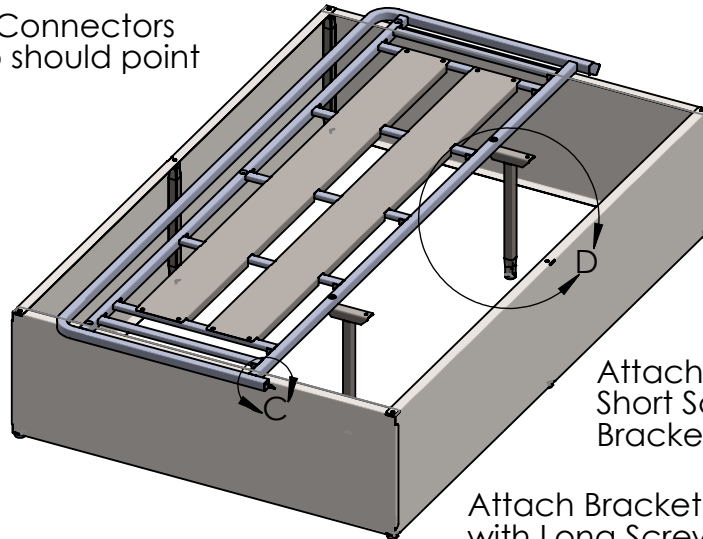
DETAIL D

Step 2: Carefully turn assembly over.

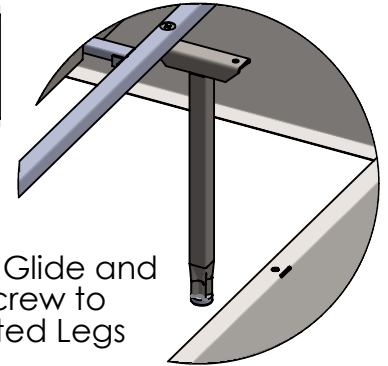
Drive long end of Tube Connectors
into one weldment. Tab should point
inward and down



DETAIL C



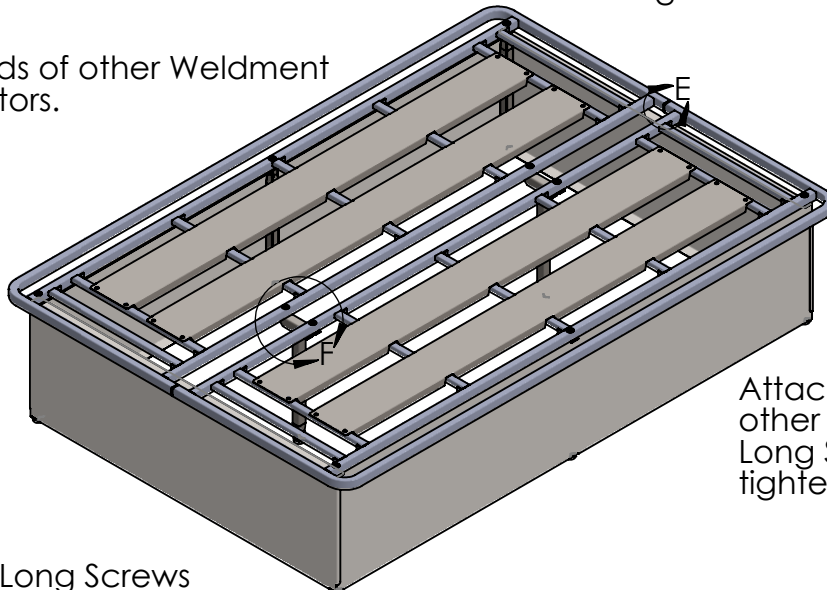
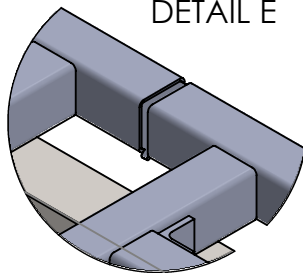
Attach Glide and
Short Screw to
Bracketed Legs



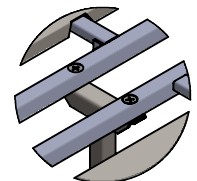
Attach Bracketed Legs to same Weldment
with Long Screws. Do not tighten yet.

Step 3: Fit open ends of other Weldment
over Tube Connectors.

DETAIL E



Attach Bracketed Legs to
other Weldment with
Long Screws. Do not
tighten yet.



DETAIL F

Install six remaining Long Screws
through Weldments and Panels into Legs.
Do not Tighten yet. A Philips screwdriver may help to align holes in Weldments, Panels and Legs.
After all ten Screws have been started, tighten all.